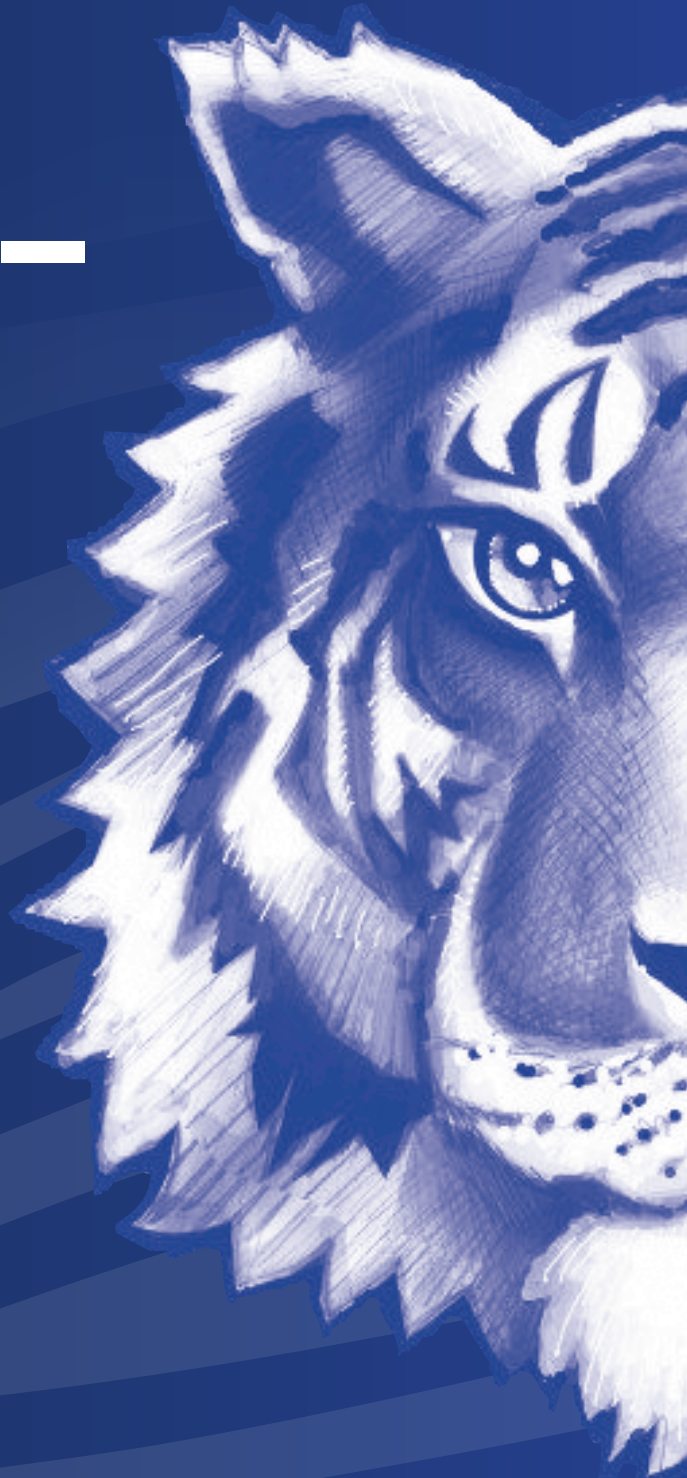


# **MASK to Stay – TEST to Play**

**& Periods of Quarantine/Isolation**

Twinsburg City School District



Twinsburg City School District

*...where the schools and the communities are one.*

JANUARY 2022



# MASK to Stay

## Exposure at School

Staff and students would continue to come to school masked, unless symptomatic, no matter the vaccination status

If unable to mask, student/staff member will need to remain home and follow ODH flowchart

As of January 5, 2022, the Board of Education continues the mask mandate.

Isolate and get tested if person starts to experience symptoms associated with COVID-19

If/when the District moves away from the current mask mandate, a mask would be required to attend school for ten (10) days after the last date of exposure

Otherwise, testing on Day 5 is recommended

Notification:

Bus exposures would follow the same rules

COVID-positive cases must still be reported to SCPH

Individual classroom/bus letters will no longer be issued. COVID-19 Dashboard to report positive cases by grade level

# CDC/ODH Flowcharts for Periods of Quarantine/Isolation

- Exposure away from school
- More restrictive with a higher standard
- Relies on vaccination status including boosters

When exposed:

If vaccinations including the booster are not up to date, the person will need to stay home and wear a mask at all times

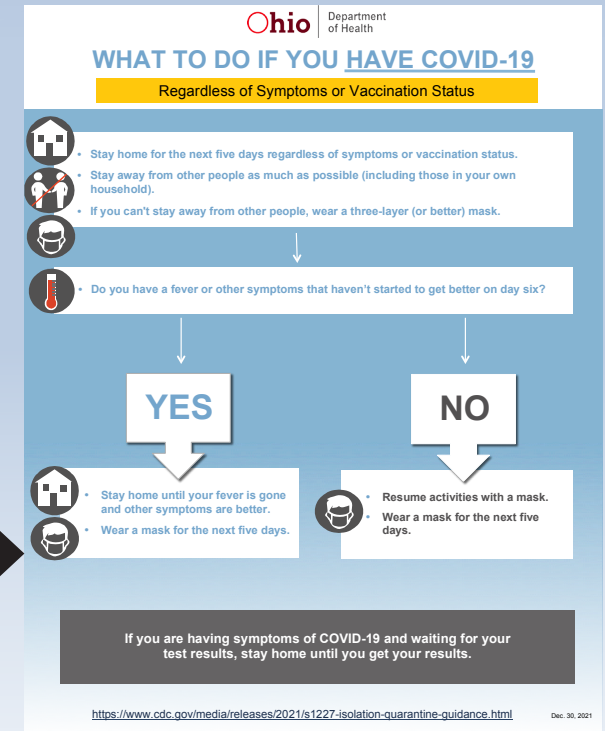
If negative, can return and wear a mask for the next five (5) days as long as the person remains symptom free.

Test on Day 5 is recommended. If a person tests positive, he/she should isolate for five (5) days after symptom onset. They can rejoin school on Day 6 if their symptoms improve and they have no fever. They must remain masked.

If symptoms develop, stay home and follow directions on the flowchart for symptomatic cases

Up-to-date vaccinated/boostered contacts are allowed to attend school but would need to wear a mask for ten (10) days after exposure

Contacts with previous COVID-19 infection in the past ninety (90) days can attend school with a mask as long as they remain symptom-free



# Exposure Away from School

Refer to the ODH flowchart for exposures

**Ohio** Department of Health

## WHAT TO DO IF YOU WERE EXPOSED TO SOMEONE WHO HAS COVID-19\*\*

And, Your COVID-19 Vaccines **Are** Up-to-Date

- If you received a booster dose of any COVID-19 vaccine.

OR

- If you completed the primary series\* of Pfizer or Moderna vaccine less than six months ago.

OR

- If you completed the primary series\* of Johnson & Johnson vaccine less than two months ago.



For 10 days

- Wear a mask around others for 10 days after your last exposure.
- Test on day five.
- If you develop symptoms or test positive, stay home.

If you tested positive for COVID-19 in the 90 days before your exposure.

- Wear a mask around others for 10 days.
- If you develop symptoms, get tested and stay home.

**Ohio** Department of Health

## WHAT TO DO IF YOU WERE EXPOSED TO SOMEONE WHO HAS COVID-19\*\*

And, You are Unvaccinated or Your Vaccines **Are Not** Up-to-Date

- If you are unvaccinated or only received one dose of Pfizer or Moderna.

OR

- If you completed the primary series\* of Pfizer or Moderna vaccine more than six months ago.

OR

- If you completed the primary series\* of Johnson & Johnson vaccine more than two months ago and no booster.



For 5 days

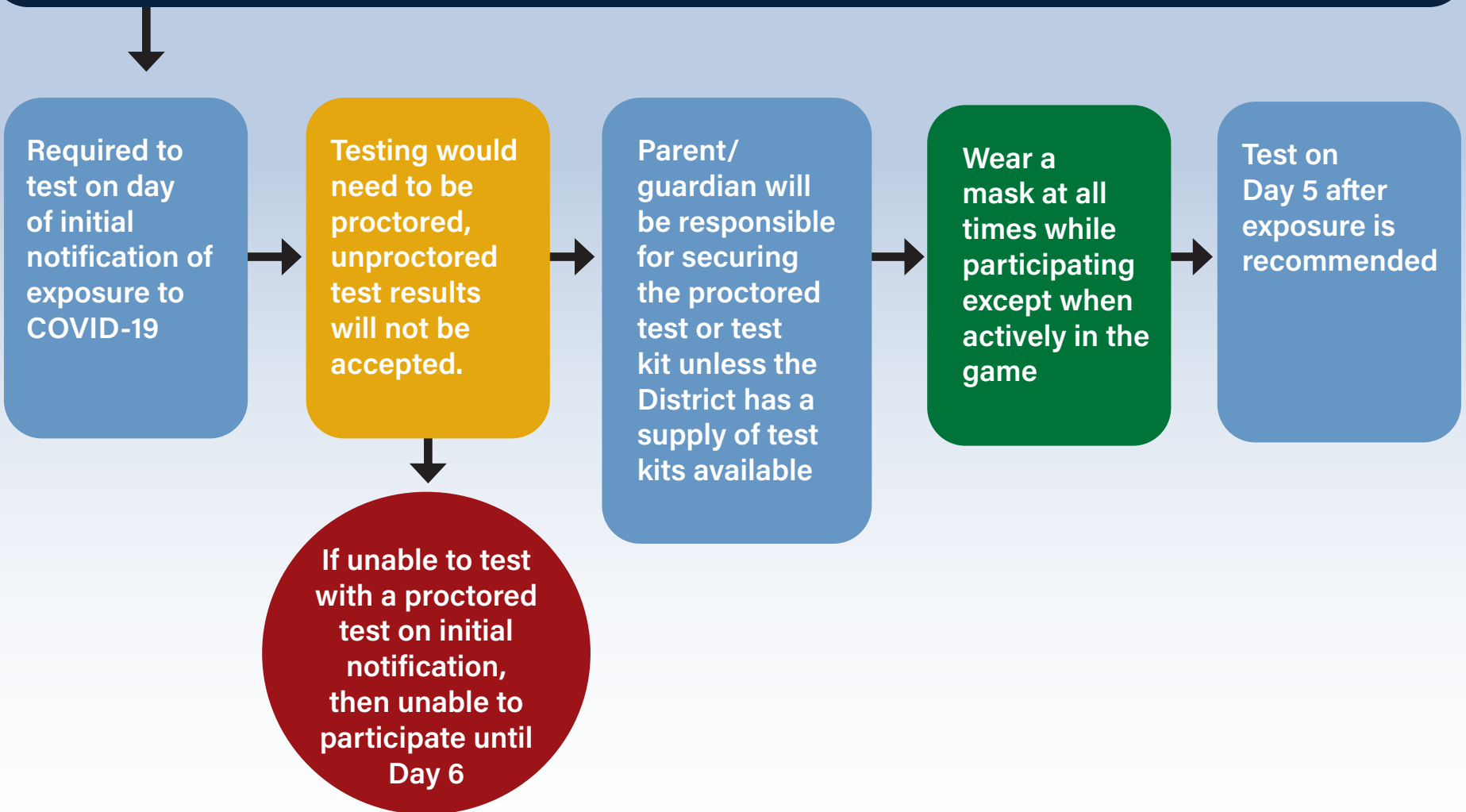
- Stay home for five days after your last exposure, then wear a mask around others for the next five days.
- Test on day five.
- If you develop symptoms or test positive, stay home.

\*A primary series consists of one dose of Johnson & Johnson vaccine; or two doses of Moderna or Pfizer vaccine; or three doses of Moderna or Pfizer vaccine if you received an additional dose because you are immunocompromised.

Thank you to Clark County Combined Health District for sharing its graphic with the Ohio Department of Health.

# TEST to Play

Asymptomatic contacts may continue to participate in extracurricular/athletic activities but must meet the following:



## Definition of 5-Day Rule

**With symptoms** – 5 days from symptom onset. Day #1 is the day after the symptom begins

**Asymptomatic** – Day #1 is the day after the test is administered

After remaining at home for required number of days, staff and students may return to school if symptoms are improving and they are fever-free for 24 hours without medication

Testing is not required to be released from quarantine/isolation

**Primary Vaccine Series** – 2 doses for Pfizer or Moderna/1 dose for Johnson & Johnson

**Up to Date on Vaccines** – defined as receiving the full primary vaccine series + any booster for which an individual is eligible (based on age and amount of time since primary vaccine series).

In addition, the CDC's guidance for the Pfizer boosters has now changed to 5 months (from 6 months) after the primary vaccine series for everyone to align with the guidance just released for 12-15 year olds. Moderna is still 6 months and Johnson & Johnson is still 2 months.