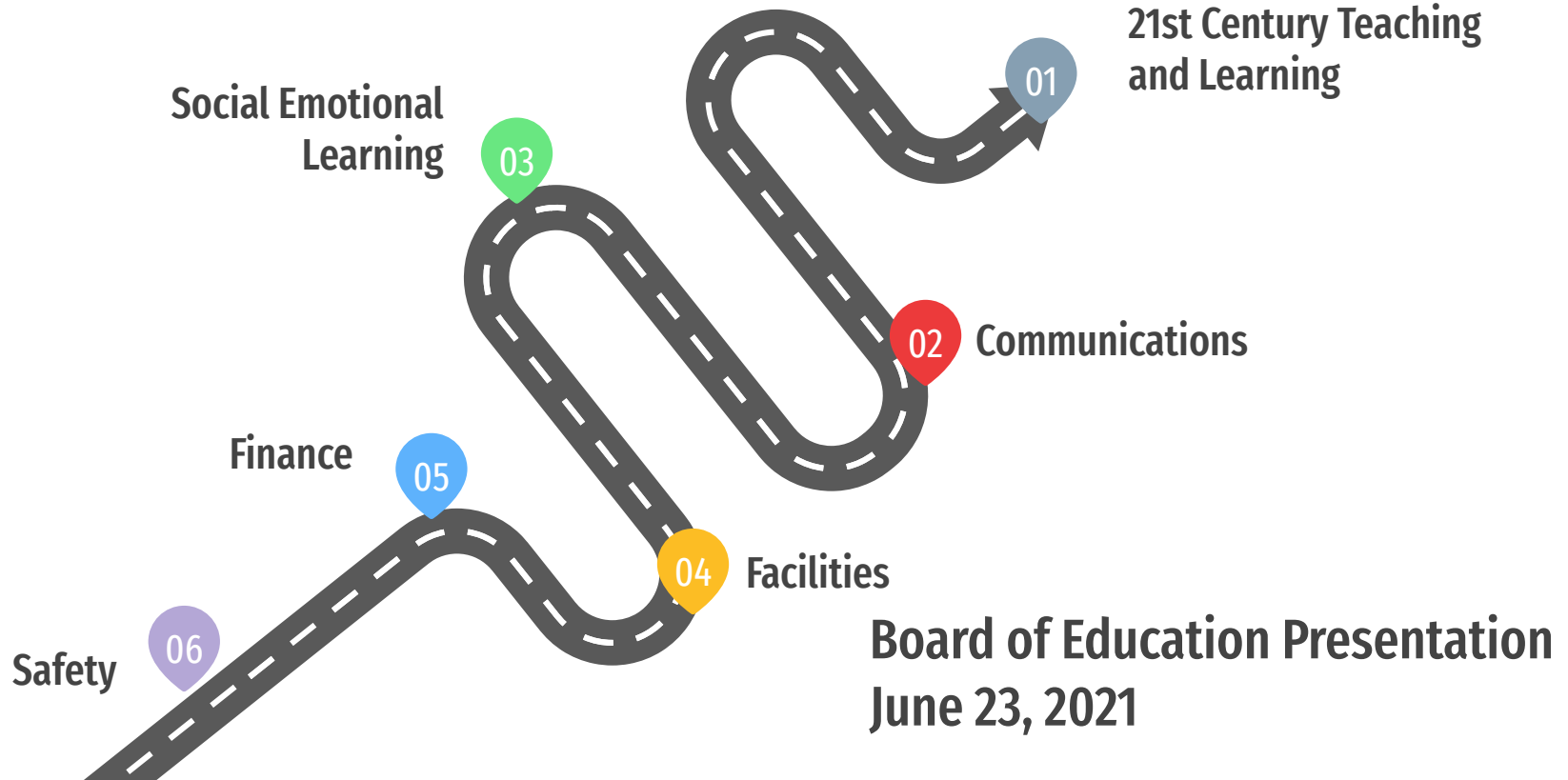


Twinsburg City School District

Road Trip Through the 2020-2021 School Year





21st Century Teaching and Learning

Each student is prepared to pursue a fulfilling post high school path and empowered to become a resilient, lifelong learner who contributes to society. This will be evidenced by High Quality Professional Development and the ongoing implementation of Blended Learning strategies in both on campus and virtual classrooms.

01



21st Century Teaching and Learning - Express Lanes

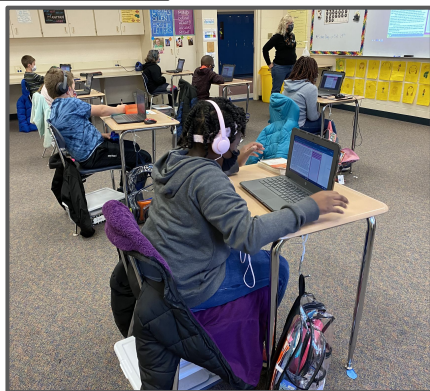
Choose Your Own Adventure
with Visual Writing Prompts
& Google Slides



Informational <small>non-fiction, expository, informational, research</small>	Narrative <small>story, fiction</small>	Personal <small>personal narrative, personal experience</small>
Persuasive <small>argument, opinion</small>	Figurative / Poetry <small>poetry, metaphor, simile</small>	Special <small>holiday and all-time fave</small>

BREAKING "OUT" IN SMALL GROUPS

- ☐ Whole Group Lesson
[Join in Jamboard](#)
- ☐ Breaking Into Small Groups
[You are a team!](#)
- ☐ Jam On
[Time to Reflect](#)
- ☐ Resources
Click [here](#) for resources



APPETIZERS	ENTRES	SIDES
Ritz Bites Shutter & Lick PDF Candy Corn Dip PDF Candy Quick Quesadilla Speed on YouTube Classroom Cheese Dip Get a timer and play button	Jamboard Jamalays Jamboard Jamboard Basics, Using Jamboard in Google Meet, Split screen in Google Meet Vegan Virtual Classroom Video Exploration Use this template to get started! Kami Chess with Meatballs Kami Getting Started w/ Kami The Kami Tools Using Kami in your Classroom Ginkiti Gyo Ginkiti The new kid on the block also called the new "kahoot". Ginkiti Walk through the steps Ginkiti and Quizlet	Google Sliders Interactive Quiz and Interactive Story Sampler How to's Create a Game - How to's Flaggrid Burger Create your EPSC Flaggrid Flaggrid for Advanced Users Assess with Flaggrid Get real time input from remote teams and online students with live polls, quizzes, work sheets, Q&As and more. Link
DRINKS Bitmoji Bermuda Bitmoji Cheesecake with text Cookbook Team Tonic Team Maker	DESSERT Caramel Gofapes create VR Pumpkin Basil animate a gif Metaverse Milkshakes make an AR exit ticket	LEARNING MENU
ALL YOU EAT BUFFET Build your own student choice menu for a lesson or unit. Share it here Combine the Entrees and Sides to create a lesson for the beginning of the school year for your new class and share here. Link Podcast Pomodoro - Taste the power of a Podcast and share your reviews here		



21st Century Teaching and Learning - Speed Bumps



01



Communications

TCSD will develop and administer a survey to measure the degree to which the communication efforts align with the District Comprehensive Communication Plan.

A decorative graphic at the bottom of the slide. It features a blue road with white dashed lines, bordered by black lines. A red callout bubble with the number '02' inside points to the second dashed line from the left.

02

Communications - Express Lanes

TCSD will develop and administer a survey to measure the degree to which the communication efforts align with the District Comprehensive Communication Plan.

A decorative graphic at the bottom of the slide. It features a blue road with white dashed lines, flanked by black borders. A red callout bubble with the number '02' inside points to the second dashed line from the left.

02

Communications - Speed Bumps

TCSD will develop and administer a survey to measure the degree to which the communication efforts align with the District Comprehensive Communication Plan.



02



Culture and Climate

TCSD will select, through committee work and piloting, a Social Emotional Curriculum that will help increase awareness that aligns with the targeted areas of mental health, equity, diversity, and empathy.



03

Culture and Climate - Express Lanes

TCSD will select, through committee work and piloting, a Social Emotional Curriculum that will help increase awareness that aligns with the targeted areas of mental health, equity, diversity, and empathy.

Humans First - Whole Child/Whole Staff Member

- Are we ok? If not, how do we make things ok?
- Soft Reopening - intentional focus to bring calm in the life of our students, staff and families

A decorative graphic at the bottom of the slide. It features a blue road with white dashed lines, flanked by black borders. A green circular callout bubble with the number '03' inside is positioned above the third dashed line from the left.

03

Culture and Climate - Express Lanes

TCSD will select, through committee work and piloting, a Social Emotional Curriculum that will help increase awareness that aligns with the targeted areas of mental health, equity, diversity, and empathy.

Start the Day Right

- Morning ritual/ morning meeting
- This also supports culturally responsive teaching and opportunities for equity

A decorative graphic at the bottom of the slide. It features a blue road with white dashed lines, bordered by black lines. A green circular bubble with the number '03' inside is positioned above the third dashed line from the left, with a small green tail pointing down to the line.

03

Culture and Climate - Express Lane

TCSD will select, through committee work and piloting, a Social Emotional Curriculum that will help increase awareness that aligns with the targeted areas of mental health, equity, diversity, and empathy.

Coping Strategies

- Focused responses to stress.
- We aimed to develop a good response to stress could be used as a transferable coping strategy.
- Remember, there is no one-size-fits-all method of coping.

03



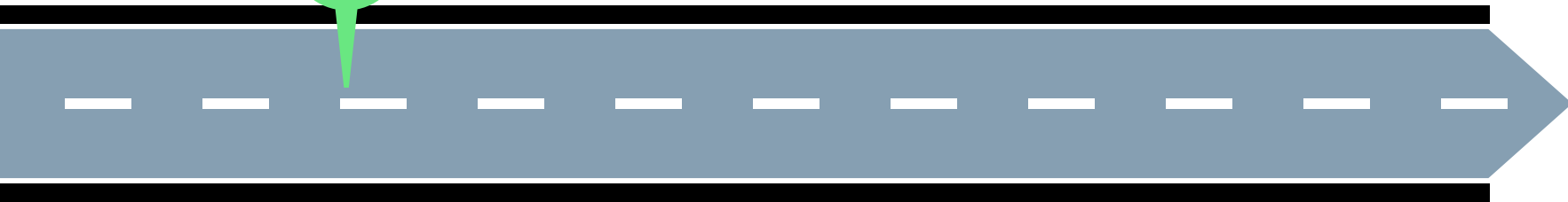
Culture and Climate - Express Lane

TCSD will select, through committee work and piloting, a Social Emotional Curriculum that will help increase awareness that aligns with the targeted areas of mental health, equity, diversity, and empathy.

District Work

- PBIS
 - Tiered Fidelity Inventory
 - District Alignment Focus: Tier 1
- Social Emotional Learning Institute
- Social Emotional Learning Committee Work

03



Culture and Climate - Speed Bump

TCSD will select, through committee work and piloting, a Social Emotional Curriculum that will help increase awareness that aligns with the targeted areas of mental health, equity, diversity, and empathy.

Social Emotional Learning

- Adoption of a Program

03



Culture and Climate - Speed Bump

TCSD will select, through committee work and piloting, a Social Emotional Curriculum that will help increase awareness that aligns with the targeted areas of mental health, equity, diversity, and empathy.

Side-effects of COVID-19

- The inability unplug

03



Culture and Climate - Speed Bump

TCSD will select, through committee work and piloting, a Social Emotional Curriculum that will help increase awareness that aligns with the targeted areas of mental health, equity, diversity, and empathy.

Attendance

- Truancy



03



Facilities

TCSD will update the Master Facilities Plan to address COVID 19 and HVAC considerations and document the recommendations which will be used to guide short and long term projects.

TCSD will partner with a marketing consultant to define a plan which engages stakeholders to gather additional feedback and determine the direction of the Conceptual Legacy Project.

Facilities - Express Lanes

- Adjustments to Facilities Master Plan that considered:
 - COVID-19
 - HVAC, Lighting and Control Systems
 - Other Building Infrastructure Reviews
- Implementation of Summer Projects based on Facilities Master Plan
- Implementation of District Reopening Plan for 20-21 and 21-22 School Years
- Savings through negotiations of over \$400,000 and over \$100,000 of grants/rebates

Facilities - Speed Bump

- Impact of COVID-19 on:
 - Renewal Operating Levy
 - Wanted to ensure that Conceptual Legacy Project does not impact future operating money needs of the District
 - Fallon Research Survey
 - Direction of Conceptual Legacy Project to be determined based on recommendation of Marketing Firm

Finance

- Strategic Planning Flow Chart was developed in June of 2016 and was updated in 2019 as part of the Strategic Planning Process. It mapped out Levies and Financial Milestones over a Five Year Timeline
- Maintain high quality programs in a cost effective manner despite Pandemic financial pressures
- Utilize Federal Grants to mitigate the COVID-19 Pandemic driven cost burden

05



Finance - Express Lanes

- Support of Issue 6 on May 4, 2021 which was the \$5 million Emergency Levy. The Community overwhelmingly supported the School District's request 61.7% to 38.3% during a pandemic.
- Federal Grants were utilized to offset the additional financial cost burden created by the COVID Pandemic. i.e. Sanitization, PPE, Chromebooks, Remote Learning, Staffing to facilitate remote learning...

Finance - Speed Bumps

- The tone and tenor of State and Federal Government to support the establishment and expansion of educational vouchers, corporate charter schools and other schemes to divert large chunks of scarce taxpayer funding from public education.
- Majority of funding to Public Education is from taxpayer approved levies. Will voter fatigue manifest itself in increased push back as the District attempts to obtain additional funding to offset State reductions and expanding education demands?

The TCSD will sustain fiscal stability by the passage of the \$5 million Emergency Renewal Levy



Safety

The student-led principal advisory group will provide feedback on the implementation of SCHD guidelines to ensure 0% spread of COVID-19 during the school year as evidenced by contact tracing and subsequent positive cases.



06



Safety - Express Lanes

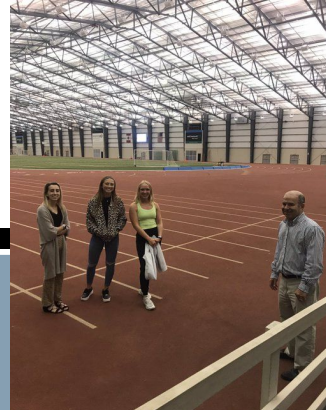
Focus on student voice - as part of the Principal Advisory council

Engaged students in Twinsburg Schools Foundation, Curriculum/Technology Committee, Listening sessions to hire new building principal, Minority Student Union

Student voice in the Academy - with the students creating the marketing materials



06



Safety - Express Lanes

COVID-19 safety protocols within the schools - students were listening and reacting appropriately

Safety - School Day Schedules, Realignment of Start/End Times,

Training that has occurred since Threat Assessment Audit and also since the NEOnet audit

06



Safety - Speed Bump

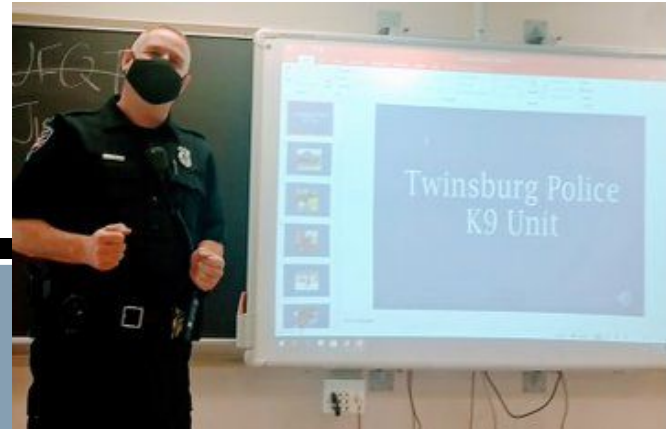
Need to continually evolve and learn (training)

New school times will require time to get into the routine.

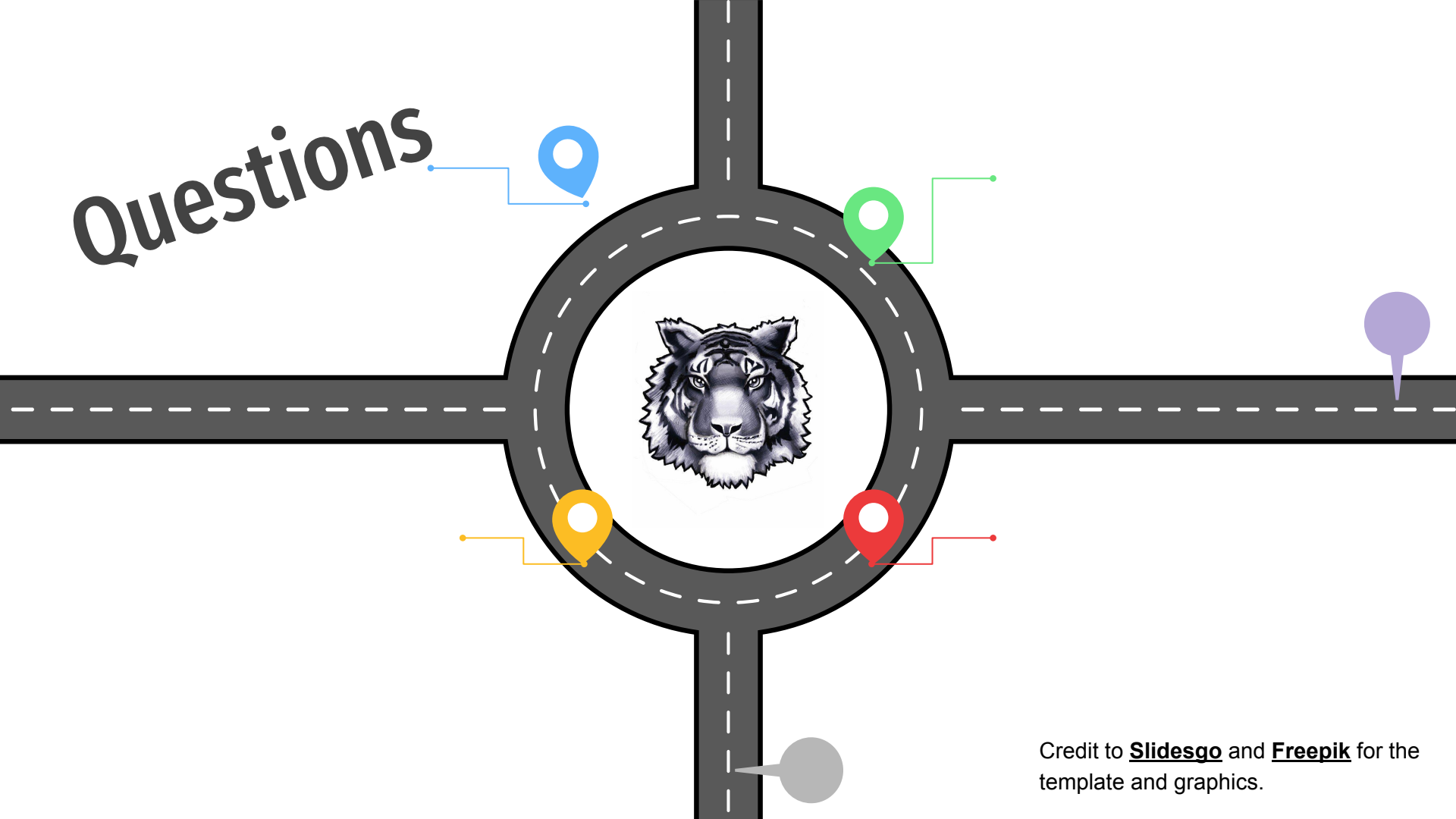
Be aware of evolutionary nature of COVID-19 and prepared to pivot out if necessary



06



Questions



Credit to **Slidesgo** and **Freepik** for the template and graphics.